

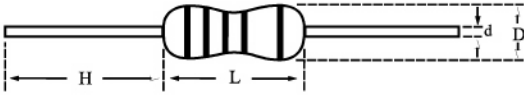
Metal Galazed Resetor - MG Series



INTRODUCTION

Excellent characteristic against high voltage surge current. Higher reliability for disconnection failure by comparing to wirewound and film type. Suitable for high voltage circuits in X-ray generators and electron microscopes.

DIMENSIONS:



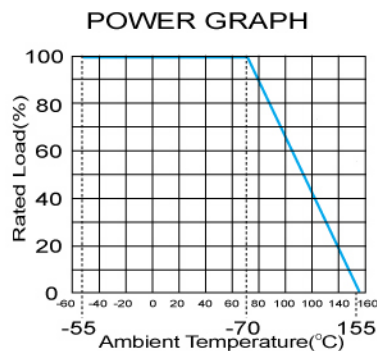
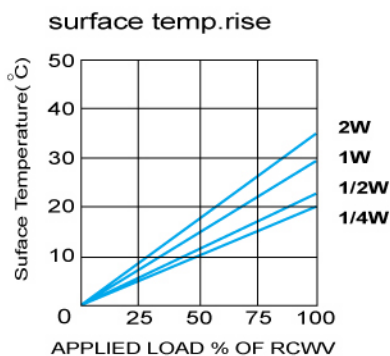
| STYLE (Din Size) | DIMENSION(mm) | | | |
|------------------|---------------|---------|--------|-----------|
| | L | D | H | d |
| MG 1/4W | 6.3±0.5 | 2.3±0.3 | 28±2.0 | 0.55±0.03 |
| MG 1/2W | 9.0±0.5 | 3.2±0.5 | 26±2.0 | 0.65±0.03 |
| MG 1W | 11.5±1.0 | 4.5±0.5 | 35±2.0 | 0.78±0.03 |
| MG 2W | 15.5±1.0 | 5.0±0.5 | 32±2.0 | 0.78±0.03 |

RATING:

| TYPE | POWER RATING | MAX. WORKING VOL | MAX. OVERLOAD VOL | Dielectric Withstanding VOL. | RESISTANCE RANGE | RESISTANCE TOLERANCE | T.C.R | RATING AMBIENT TEMP | OPERATING TEMP. RANGE |
|--------|--------------|--------------------|--------------------|------------------------------|------------------|------------------------|--------------------------|---------------------|--|
| MG1/4W | 0.25W | DC1600V AC1150V | DC2000V AC1500V | 700V | 100K-200M | J(±5%)E24 F(±1%)E96 | ±200PPM/°C ±100PPM/°C | 70°C | -55°C±155°C RATING AMBIENT TEMP ±70°C |
| MG1/2W | 0.5W | DC2000V | 2500V | 700V | 100K-200M | | | | |
| MG1W | 1W | DC3500V | 4000V | 700V | 100K-200M | | | | |
| MG2W | 2W | DC3500V | 4000V | 700V | 100K-200M | | | | |

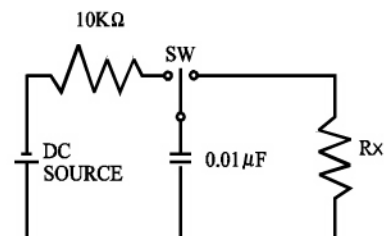
PERFORMANCE SPECIFICATIONS:

| TEST ITEMS | Test Methods | SPECIFICATIONS |
|---------------------------------|--|---|
| Short time overload | Rated Voltage X 2.5 or Max. overload Vol., whichever is lower, for 5sec. | ±(1.0%+0.05%) |
| Moisture resistance | 40°C±2°C, 90%~95%RH,1000h 90 min 【ON】 30 min 【OFF】 | ±(5.0%+0.05%) |
| Load life | 1000hours at rated voltage, 70°C 90 min 【ON】 30 min 【OFF】 | ±(3.0%+0.05%) |
| Insulation resistance | 500±50V DC During 1 min V-Block method | ± 10,000M Ω Over |
| Dielectric withstanding voltage | In V-Block for 60 seconds | 1/4W 400V 1/2W 500V 1W 800V 2W 1000V |
| Resistance to soldering hest | 260°C ±5°C, 10s±1s or 350°C ±10°C, 3.5s±0.5s | ±(1.0%+0.05%) |
| Temperature cycling | | ±(1.0%+0.05%) |
| Terminal strength | Direct load for 10 sec. In the direction off the terminal leads. | Tensile ≧ 2.5kg |
| Anti-surge characteristics | R ≧ 100KR: 8KV/10nF R < 100KR: 10KV/10nF 2.5sec on/off 10 Cycle | Rmax. ±10% No damage |



Hi Voltage Surge Test

- 10 discharges from a 10nf capacitor charged to Vmax : 12 discharges/min
- no evidence of flash over , mechanical damage , arching or , insulation breakdown.



2.5 sec ON
2.5 sec OFF
10 cycles